

# Halifax Area

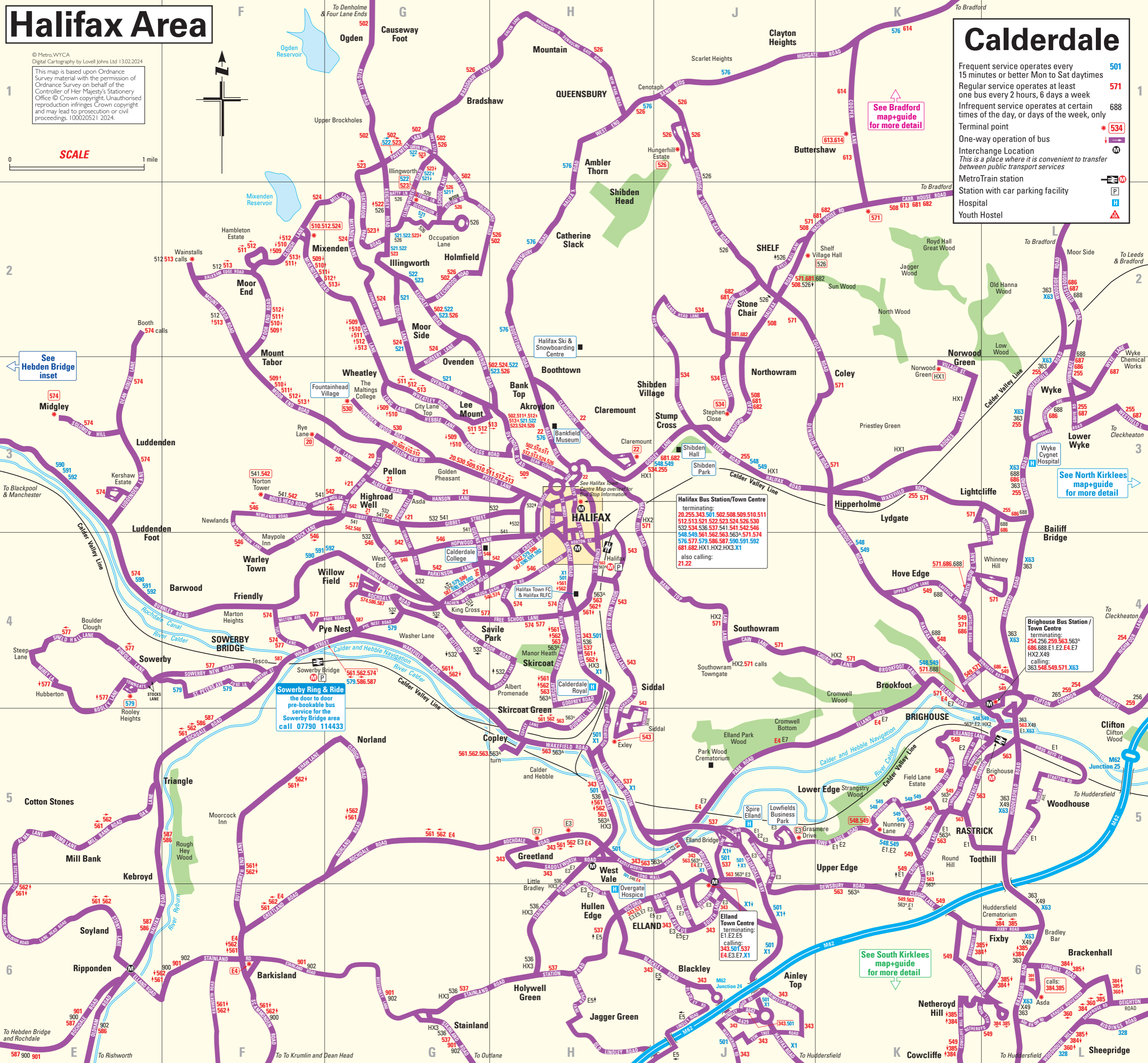
© Metro, WYCA  
Digital Cartography by Lovell Johns Ltd 13.02.2024  
This map is based upon Ordnance Survey material with the permission of Ordnance Survey on behalf of the Controller of Her Majesty's Stationery Office © Crown copyright. Unauthorised reproduction infringes Crown copyright and may lead to prosecution or civil proceedings. 100020521 2024.



SCALE 1 mile

# Calderdale

- Frequent service operates every 15 minutes or better Mon to Sat daytime **501**
- Regular service operates at least one bus every 2 hours, 6 days a week **571**
- Infrequent service operates at certain times of the day, or days of the week, only **688**
- Terminal point **\* 534**
- One-way operation of bus **↓**
- Interchange Location **M**
- This is a place where it is convenient to transfer between public transport services
- MetroTrain station **M**
- Station with car parking facility **P**
- Hospital **H**
- Youth Hostel **A**



See Hebden Bridge inset

See North Kirklee's map-guide for more detail

See South Kirklee's map-guide for more detail

**Halifax Bus Station/Town Centre**  
terminating:  
20.255.343.501.502.508.509.510.511  
512.513.521.522.523.524.526.530  
532.534.536.537.541.541.542.546  
548.549.561.562.563.563A.571.574  
576.577.579.586.587.590.591.592  
681.682.HX1.HX2.HX3.X1  
also calling:  
21.22

**Brighouse Bus Station / Town Centre**  
terminating:  
254.256.259.563.563A  
686.688.E1.E2.E4.E7  
HX2.X49  
calling:  
363.548.549.571.X63

**Elland Town Centre**  
terminating:  
E1.E2.E5  
calling:  
343.501.537  
E4.E3.E7.X1

**Sowerby Ring & Ride**  
the door to door pre-bookable bus service for the Sowerby Bridge area  
call 07790 114433