

No
Stamp
Required

FREEPOST CONSULTATION TEAM (WYCA)

Introduction

The West Yorkshire Combined Authority (WYCA), in partnership with Leeds City Council, is proposing a scheme to deliver improvements to transport facilities, information and infrastructure in Morley.

Following the completion of a phase 1 scheme which involved installation of a Hub Totem and improved wayfinder signage between the Town Centre and the Railway Station, we are beginning consultation on phase 2.



KEEPINTO CH

www.wymetro.com

Visit www.wymetro.com for timetable downloads, Journey Planner, tickets, the very latest public transport updates and news ...and lots more.



Bus & train timetable downloads



Journey Planner



yournextbus

www.wymetro.com/ynb
or text your bus stop number to 63876*



Twitter

@metrotravelnews



Facebook

/westyorkshiremetro



Messenger free e-letter

www.wymetro.com/messenger

Or you can call



MetroLine (Local travel) 0113 245 7676

National Rail Enquiries 03457 48 49 50

For timetables in large print, Braille, audio CD or tape, please contact us on 0113 245 7676.

Textphone / Minicom users can use the text relay service by dialling 18001 0113 245 7676.



*One standard outbound message rate + no more than 12p for our reply
Published by the West Yorkshire Combined Authority

Morley Town Centre Proposed Transport Hub

Public Consultation



 **Leeds**
CITY COUNCIL

 **WEST YORKSHIRE**
COMBINED AUTHORITY

 **METRO**

 **WEST YORKSHIRE**
COMBINED AUTHORITY

 **METRO**

The scheme

The key aims of the scheme are to:

- Improve the interchange and pedestrian access to and from bus services
- Address perceived pedestrian safety issues
- Improve the operating environment for bus services
- Improve the road environment for all users

To achieve these objectives we are proposing the following:

- Changes to the existing traffic flow:
 - Queen Street - making it one way from Queensway to Wellington Street
 - Wellington Street (cobble section) - making it one way **from** Queen Street, reversing the existing flow
- All existing bus stops to be located on one side of Queen Street and Albion Street
- Bus services to common destinations to be allocated to same or adjacent bus stops
- Relocate on-street parking to one side of Queen Street and Wellington Street
- Revision of existing parking restrictions to accommodate new highways arrangements
- Improvements to crossing points and waiting areas for pedestrians
- Provision of a dedicated loading bay on Queen Street
- Car Club parking bay provision on Wellington Street

A complementary scheme involving public realm improvement between the Town Hall and Morrisons is also being developed for the future.

See the plans

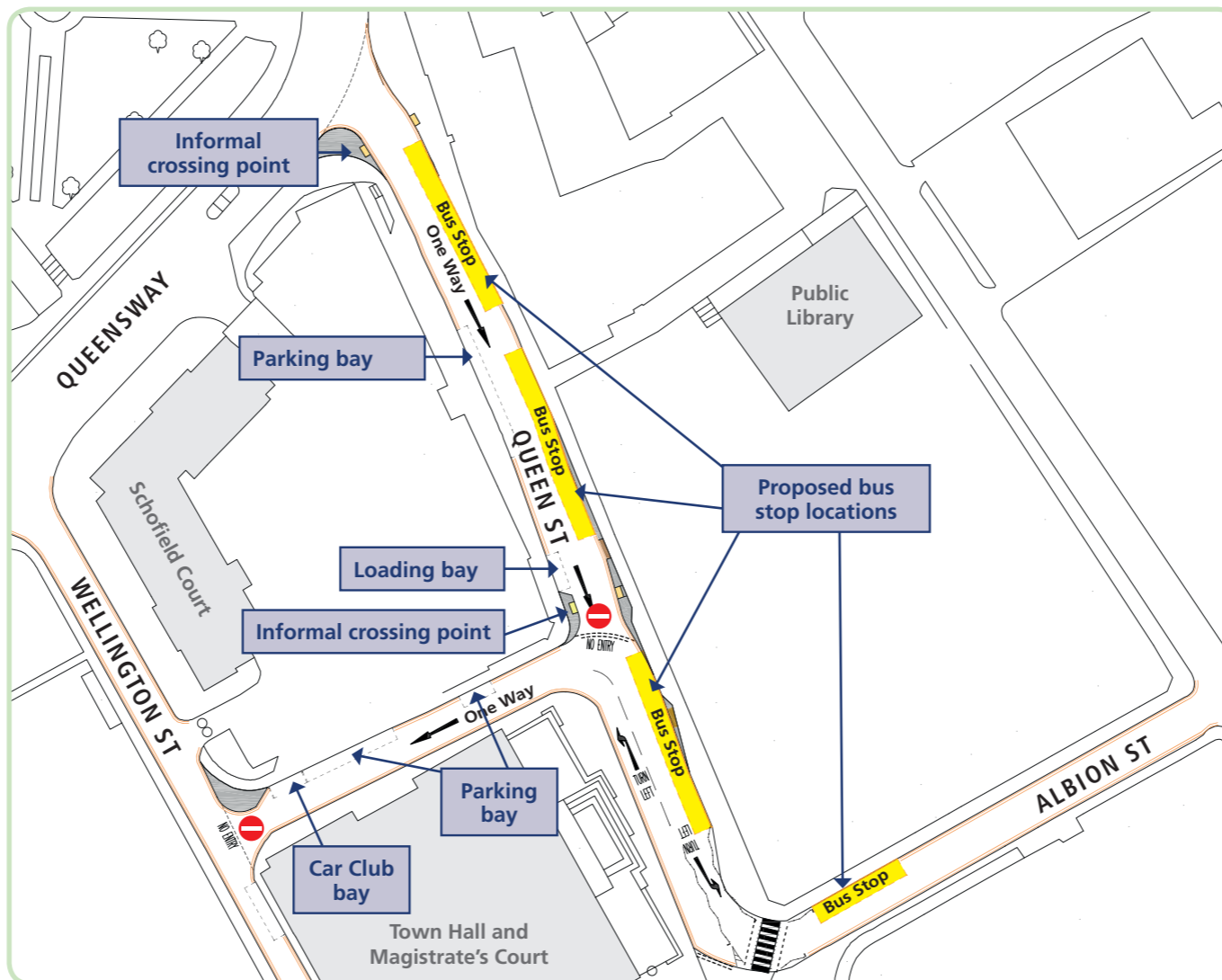
A simplified version of the proposed plans is shown overleaf. You can view the full proposal by visiting www.wymetro.com/morleyhub

Have your say

We would like your feedback on the outline plans.

**Do you support the proposals?
Is there anything we have missed or you would like to see included?**

The consultation closes on Friday 9 September 2016.



Ways to have your say

- Complete the tear-off section of this leaflet and post it back using our FREEPOST address or
- Fill in our online survey at www.wymetro.com/morleyhub
- Attend our public drop-in session on 18 August 2016 and give your feedback in person.

TEAR OFF HERE

If you wish to provide feedback on the outline plans, complete this detachable feedback form and post it back to us by Friday 9 September 2016.

The FREEPOST address is printed on the reverse.

Thinking about our key aims for the scheme, which is (a) most important to you, and (b) least important to you:

Please tick one box in column (a) and one box in column (b).

	(a) Most important	(b) Least important
Improve the interchange between, and pedestrian access to and from, bus services	<input type="checkbox"/>	<input type="checkbox"/>
Address current pedestrian safety issues	<input type="checkbox"/>	<input type="checkbox"/>
Improve the operating environment for bus services	<input type="checkbox"/>	<input type="checkbox"/>
Improve the road environment for all users	<input type="checkbox"/>	<input type="checkbox"/>

Do you support the Morley town centre transport hub proposals?:

Yes No What are your reasons?

✍

Please tell us if we have missed anything you would like to see included, or provide us with any further comments you have on the proposals:

✍